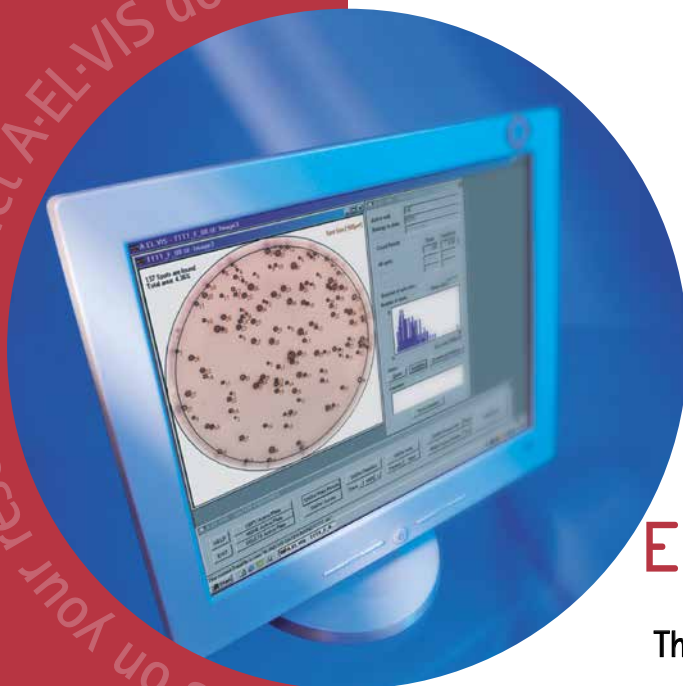
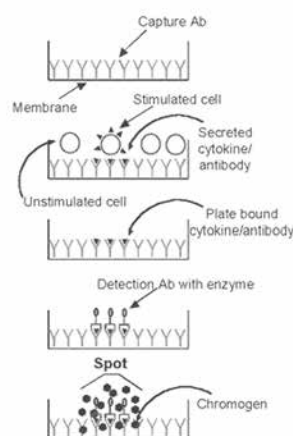


Automated
ELISA-Spot Assay
Video Analysis
Systems®

A•EL•VIS

Based on the background of a research immune pharmacologicallab, A.EL.VIS is specialised in developing Automated ELISA-Spot Assay Video Analysis Systems. Our mission for the customer is to offer reliable and user friendly systems of best quality as well as an excellent after sales service.



Eli•Analyse

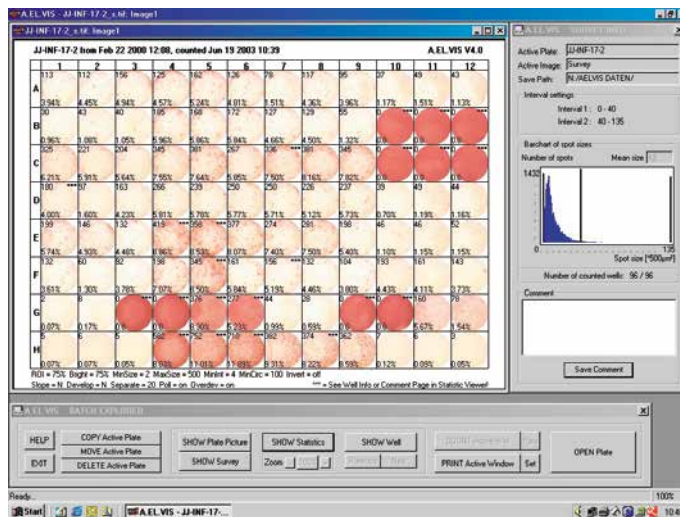
The ELISPOT Analysis Software

The focus when developing the A.EL.VIS ELISPOT Analysis Software was set on user friendliness as well as on productivity and flexibility. By using efficient image analysis algorithms the software makes powerful strategies of dealing with biologically variable spots available.

All A.EL.VIS instruments are powered by the ELISPOT Analysis Software. In addition the software package can be used as a stand alone version for offline analysis. This allows to share an instrument with other users and to continue analysis at your personal office PC.

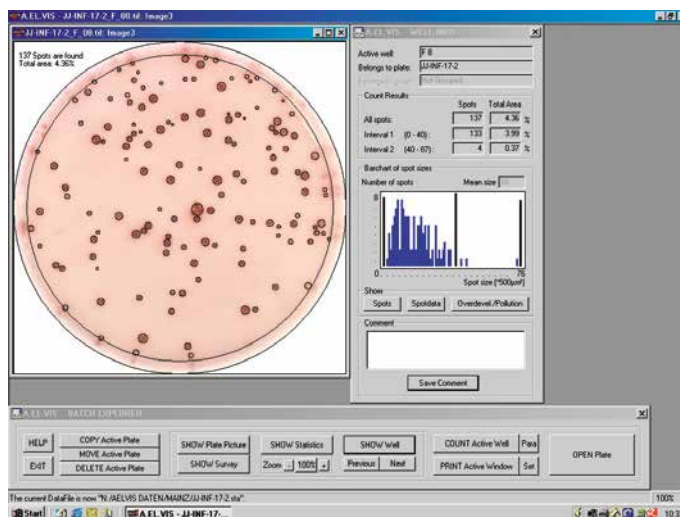
Focus on your research and let A•EL•VIS do it!

Eli•Analyse



The main features of the A.EL.VIS ELISPOT Analysis Software are:

- Spot finding based on edge detection algorithm
- Automatic background correction
- Separation of connected spots
- Calculation of spot size, intensity, shape and color
- Dual-Color Analysis
- Identification of overdeveloped areas and pollution
- Re-analysis of stored plates
- Batch mode i.e. for overnight processing
- Individual plate maps including replicates
- Statistical evaluation of replicates
- Calculation of spot size and intensity distribution
- Data export to external programs
- Integrated file management system
- Test protocols to store and reload parameter settings
- User management system with individual access levels
- Full Audit Trail for FDA 21 CFR Part 11 compliance
- Cell colony counting module optionally available



stefan badur electronic
GmbH & Co. KG
Zeiss-Str. 10
D-30519 Hannover
Germany

Fon: +49 511 350 9443
Fax: +49 511 350 9445

email: info@aelvis.de
<http://www.aelvis.de>